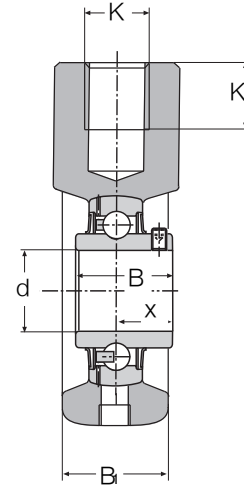
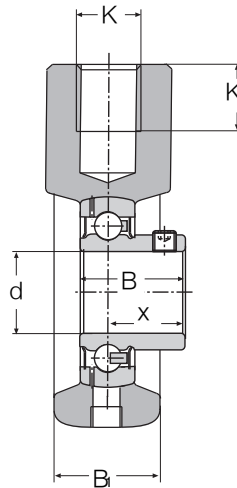
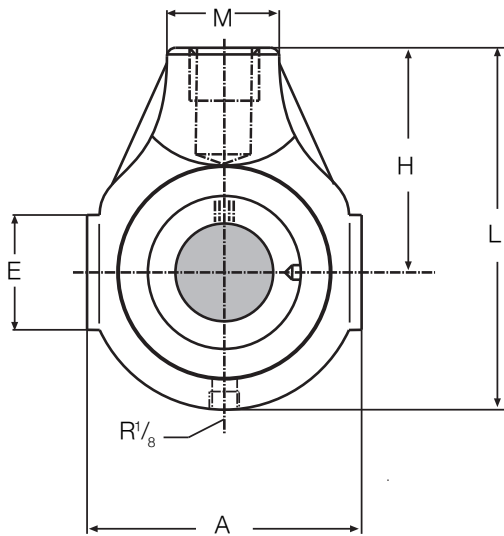


# Housed Bearing Units



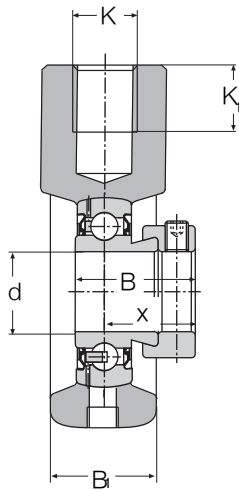
|        |                     |                         |
|--------|---------------------|-------------------------|
| Series | SKIS<br>SKIU<br>SKI | SKIH<br>SKIH-R3<br>SKIK |
|--------|---------------------|-------------------------|



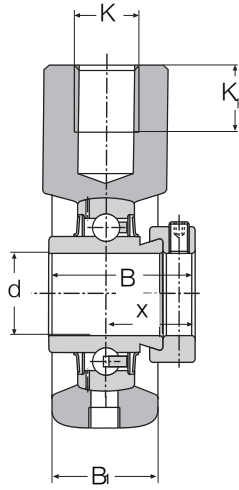
SKIS

SKIU

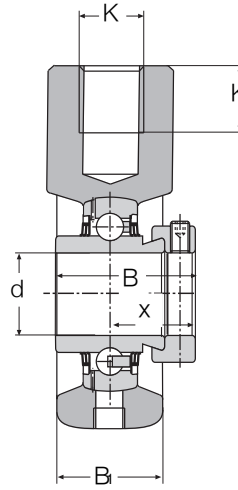
| Unit Ref | Shaft Diameter<br>d | Bearing Ref | Weight<br>kg | Dimensions mm |     |    |    |    |      |      |                |      |                | Load Rating     |                             |
|----------|---------------------|-------------|--------------|---------------|-----|----|----|----|------|------|----------------|------|----------------|-----------------|-----------------------------|
|          |                     |             |              | A             | L   | H  | E  | M  | B    | x    | B <sub>i</sub> | K    | K <sub>i</sub> | Dynamic<br>c kN | Static<br>c <sub>0</sub> kN |
| SKI20    | 20                  | SA204       | 0,55         | 65            | 91  | 58 | 38 | 30 | 31,0 | 23,5 | 31,0           | M 16 | 20             | 12,8            | 6,6                         |
| SKIS20   |                     | SB204       | 0,52         | 65            | 91  | 58 | 38 | 30 | 25,0 | 18,0 | 31,0           | M 16 | 20             | 12,8            | 6,6                         |
| SKIU20   |                     | UC 204      | 0,55         | 65            | 91  | 58 | 38 | 30 | 31,0 | 18,3 | 31,0           | M 16 | 20             | 12,8            | 6,6                         |
| SKIH20   |                     | HC 204      | 0,58         | 65            | 91  | 58 | 38 | 30 | 43,7 | 26,6 | 31,0           | M 16 | 20             | 12,8            | 6,6                         |
| SKIH20R3 |                     | HC 204 R3   | 0,58         | 65            | 91  | 58 | 38 | 30 | 43,7 | 26,6 | 31,0           | M 16 | 20             | 12,8            | 6,6                         |
| SKI25    | 25                  | SA205       | 0,72         | 70            | 99  | 64 | 38 | 35 | 31,0 | 23,5 | 31,0           | M 20 | 22             | 14,0            | 7,8                         |
| SKIS25   |                     | SB205       | 0,68         | 70            | 99  | 64 | 38 | 35 | 27,0 | 19,5 | 31,0           | M 20 | 22             | 14,0            | 7,8                         |
| SKIU25   |                     | UC 205      | 0,72         | 70            | 99  | 64 | 38 | 35 | 34,1 | 19,8 | 31,0           | M 20 | 22             | 14,0            | 7,8                         |
| SKIH25   |                     | HC 205      | 0,78         | 70            | 99  | 64 | 38 | 35 | 44,4 | 26,9 | 31,0           | M 20 | 22             | 14,0            | 7,8                         |
| SKIH25R3 |                     | HC 205 R3   | 0,78         | 70            | 99  | 64 | 38 | 35 | 44,4 | 26,9 | 31,0           | M 20 | 22             | 14,0            | 7,8                         |
| SKIK25   | 20                  | UK205       | 0,68         | 70            | 99  | 64 | 38 | 35 | 35,0 | -    | 31,0           | M 20 | 22             | 14,0            | 7,8                         |
| SKI30    | 30                  | SA206       | 1,10         | 85            | 114 | 72 | 40 | 40 | 35,7 | 26,7 | 35,7           | M 24 | 25             | 19,5            | 11,3                        |
| SKIS30   |                     | SB206       | 1,05         | 85            | 114 | 72 | 40 | 40 | 30,0 | 22,0 | 35,7           | M 24 | 25             | 19,5            | 11,3                        |
| SKIU30   |                     | UC 206      | 1,10         | 85            | 114 | 72 | 40 | 40 | 38,1 | 22,2 | 35,7           | M 24 | 25             | 19,5            | 11,3                        |
| SKIH30   |                     | HC 206      | 1,15         | 85            | 114 | 72 | 40 | 40 | 48,4 | 30,1 | 35,7           | M 24 | 25             | 19,5            | 11,3                        |
| SKIH30R3 |                     | HC 206 R3   | 1,15         | 85            | 114 | 72 | 40 | 40 | 48,4 | 30,1 | 35,7           | M 24 | 25             | 19,5            | 11,3                        |
| SKIK30   | 25                  | UK206       | 1,05         | 85            | 114 | 72 | 40 | 40 | 38,0 | -    | 35,7           | M 24 | 25             | 19,5            | 11,3                        |
| SKI35    | 35                  | SA207       | 1,30         | 90            | 122 | 76 | 49 | 40 | 38,9 | 29,4 | 38,9           | M 24 | 25             | 25,5            | 15,3                        |
| SKIS35   |                     | SB207       | 1,20         | 90            | 122 | 76 | 49 | 40 | 32,0 | 23,5 | 38,9           | M 24 | 25             | 25,5            | 15,3                        |
| SKIU35   |                     | UC 207      | 1,30         | 90            | 122 | 76 | 49 | 40 | 42,9 | 25,4 | 38,9           | M 24 | 25             | 25,5            | 15,3                        |
| SKIH35   |                     | HC 207      | 1,40         | 90            | 122 | 76 | 49 | 40 | 51,1 | 32,3 | 38,9           | M 24 | 25             | 25,5            | 15,3                        |
| SKIH35R3 |                     | HC 207 R3   | 1,40         | 90            | 122 | 76 | 49 | 40 | 51,1 | 32,3 | 38,9           | M 24 | 25             | 25,5            | 15,3                        |
| SKIK35   | 30                  | UK207       | 1,20         | 90            | 122 | 76 | 49 | 40 | 43,0 | -    | 38,9           | M 24 | 25             | 25,5            | 15,3                        |



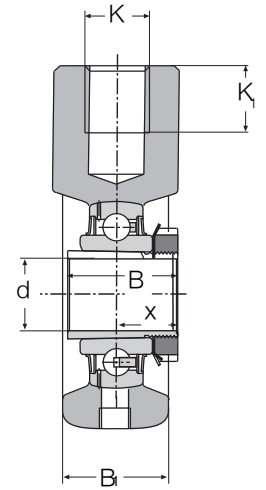
SKI



SKIH



SKIH-R3



SKIK

| Unit Ref  | Shaft Diameter d | Bearing Ref | Weight kg | Dimensions mm |     |     |    |    |      |      |                |      |                | Load Rating  |                          |
|-----------|------------------|-------------|-----------|---------------|-----|-----|----|----|------|------|----------------|------|----------------|--------------|--------------------------|
|           |                  |             |           | A             | L   | H   | E  | M  | B    | x    | B <sub>1</sub> | K    | K <sub>1</sub> | Dynamic c kN | Static c <sub>0</sub> kN |
| SKI40     | 40               | SA208       | 1,65      | 100           | 135 | 85  | 45 | 40 | 43,7 | 32,7 | 43,7           | M 24 | 25             | 32,5         | 19,8                     |
| SKIS40    |                  | SB208       | 1,55      | 100           | 135 | 85  | 45 | 40 | 34,0 | 25,0 | 43,7           | M 24 | 25             | 32,5         | 19,8                     |
| SKIU40    |                  | UC 208      | 1,65      | 100           | 135 | 85  | 45 | 40 | 49,2 | 30,2 | 43,7           | M 24 | 25             | 32,5         | 19,8                     |
| SKIH40    |                  | HC 208      | 1,80      | 100           | 135 | 85  | 45 | 40 | 56,3 | 34,9 | 43,7           | M 24 | 25             | 32,5         | 19,8                     |
| SKIH 40R3 |                  | HC 208 R3   | 1,80      | 100           | 135 | 85  | 45 | 40 | 56,3 | 34,9 | 43,7           | M 24 | 25             | 32,5         | 19,8                     |
| SKIK 40   | 35               | UK208       | 1,55      | 100           | 135 | 85  | 45 | 40 | 46,0 | -    | 43,7           | M 24 | 25             | 32,5         | 19,8                     |
| SKI50     | 50               | SA 210      | 1,90      | 110           | 145 | 90  | 46 | 40 | 43,7 | 32,7 | 43,7           | M 24 | 25             | 35,0         | 23,2                     |
| SKIS 50   |                  | SB210       | 1,75      | 110           | 145 | 90  | 46 | 40 | 43,5 | 32,6 | 43,7           | M 24 | 25             | 35,0         | 23,2                     |
| SKIU50    |                  | UC 210      | 1,90      | 110           | 145 | 90  | 46 | 40 | 51,6 | 32,6 | 43,7           | M 24 | 25             | 35,0         | 23,2                     |
| SKIH50    |                  | HC 210      | 2,15      | 110           | 145 | 90  | 46 | 40 | 62,7 | 38,1 | 43,7           | M 24 | 25             | 35,0         | 23,2                     |
| SKIH50R3  |                  | HC 210 R3   | 2,15      | 110           | 145 | 90  | 46 | 40 | 62,7 | 38,1 | 43,7           | M 24 | 25             | 35,0         | 23,2                     |
| SKIK 50   | 45               | UK210       | 1,75      | 110           | 145 | 90  | 46 | 40 | 55,0 | -    | 43,7           | M 24 | 25             | 35,0         | 23,2                     |
| SKI60     | 60               | SA 212      | 3,65      | 143           | 175 | 104 | 50 | 60 | 53,1 | 39,6 | 53,3           | M 24 | 25             | 52,0         | 36,0                     |
| SKIU60    |                  | UC 212      | 3,50      | 143           | 175 | 104 | 50 | 60 | 65,1 | 39,7 | 53,3           | M 24 | 25             | 52,0         | 36,0                     |
| SKIH60    |                  | HC 212      | 3,70      | 143           | 175 | 104 | 50 | 60 | 77,7 | 46,8 | 53,3           | M 24 | 25             | 52,0         | 36,0                     |
| SKIH60R3  |                  | HC 212 R3   | 3,70      | 143           | 175 | 104 | 50 | 60 | 77,7 | 46,8 | 53,3           | M 24 | 25             | 52,0         | 36,0                     |
| SKIK 60   | 55               | UK212       | 3,40      | 143           | 175 | 104 | 50 | 60 | 65,0 | -    | 53,3           | M 24 | 25             | 52,0         | 36,0                     |